

Winchester

2,466-2,887 sq. ft.

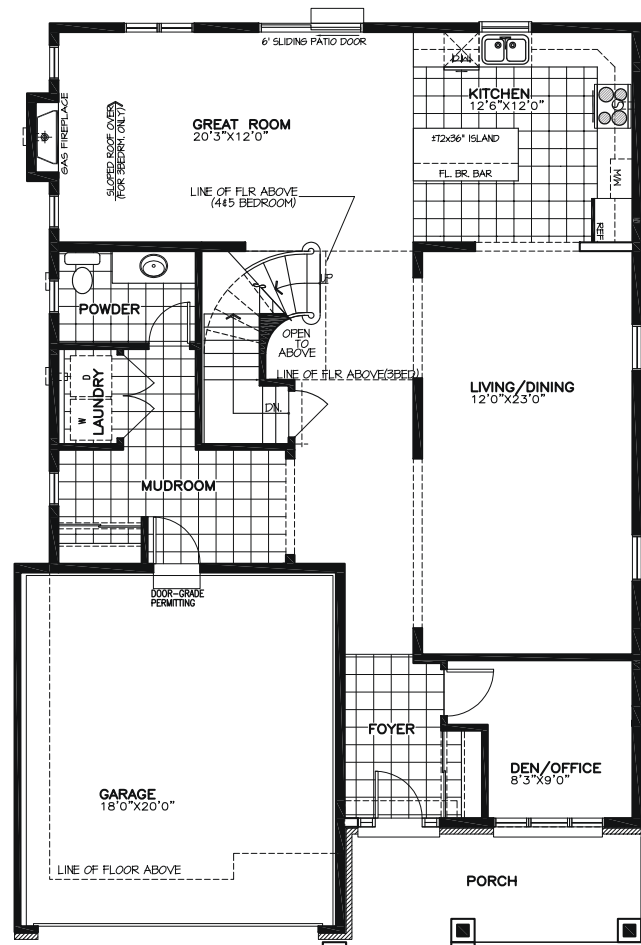


PHOENIX HOMES
SINCE 1988

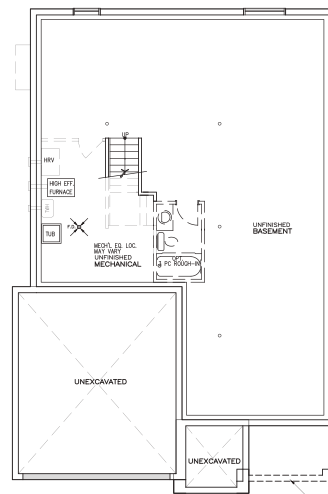


PHOENIX HOMES
SINCE 1988

Winchester

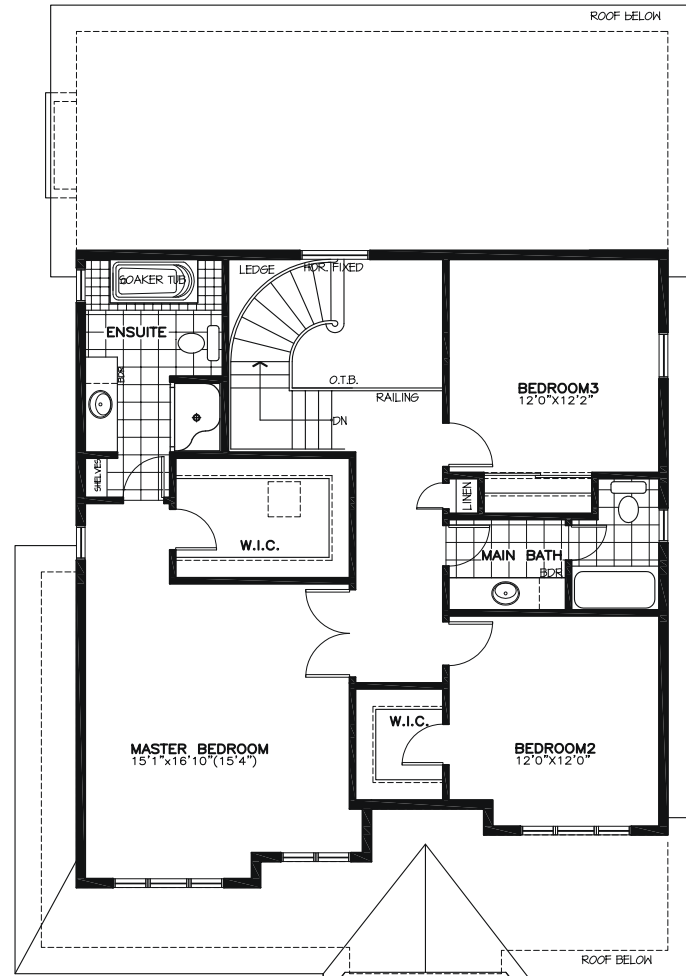


GROUND FLOOR PLAN
(ELEVATION A, B, C)

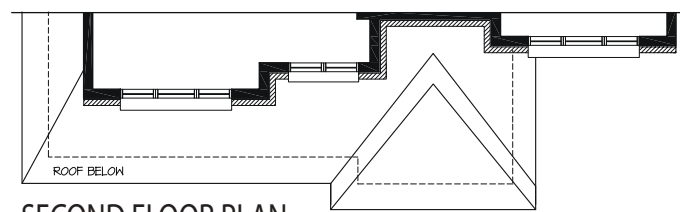


BASEMENT PLAN
(ELEVATION A, B)

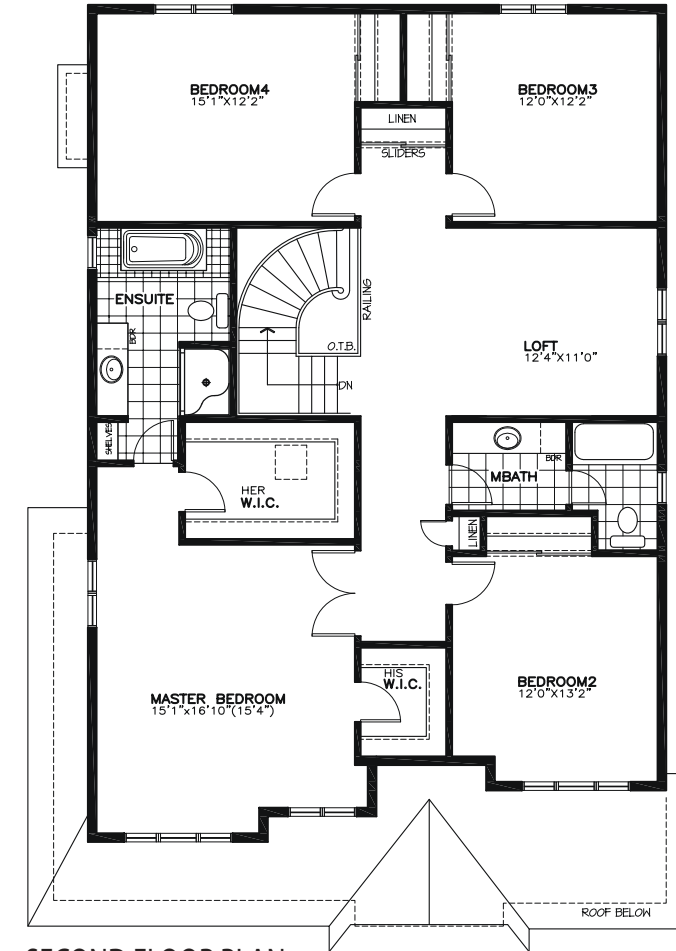
EXTEND PORCH
FOR ELEVATION
A&C ONLY



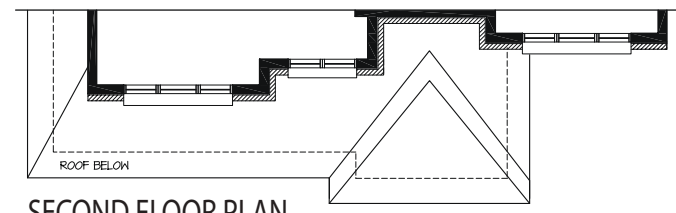
SECOND FLOOR PLAN
(3 BEDROOM - ELEVATION A, C)



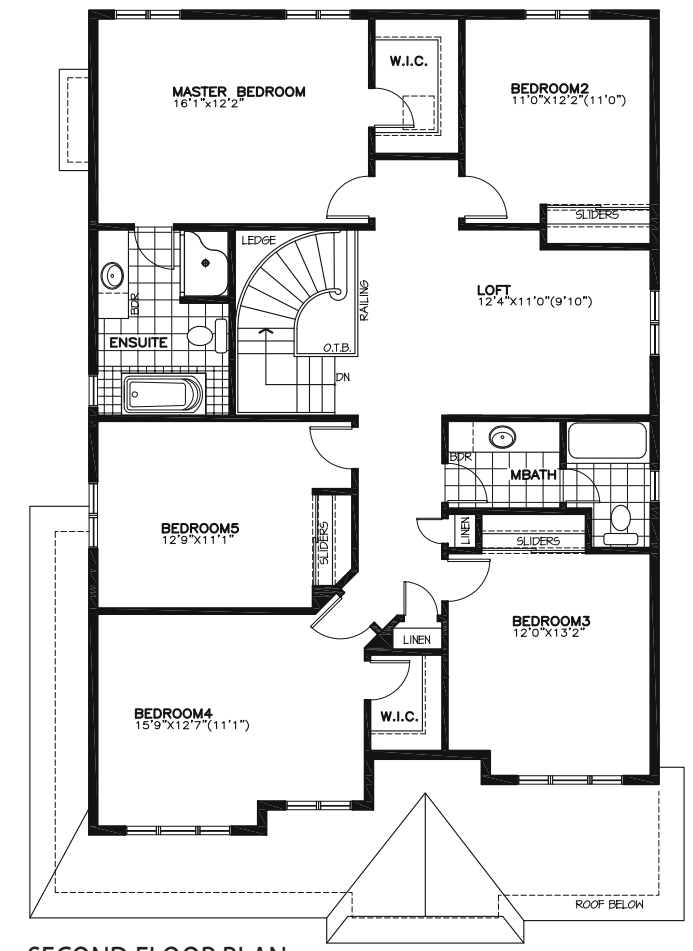
SECOND FLOOR PLAN
(3 BEDROOM - ELEVATION B)



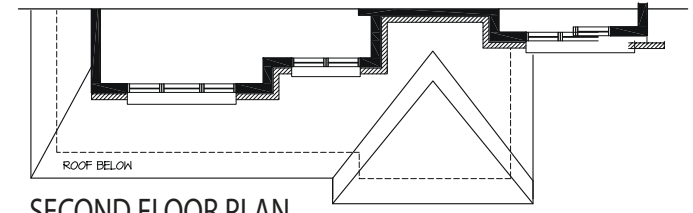
SECOND FLOOR PLAN
(4 BED + LOFT - ELEVATION A, C)



SECOND FLOOR PLAN
(4 BED + LOFT - ELEVATION B)



SECOND FLOOR PLAN
(5 BED + LOFT - ELEVATION A, C)



SECOND FLOOR PLAN
(5 BED + LOFT - ELEVATION B)

Winchester

*Total square footage includes open space where applicable. Plans are subject to change without notice. Actual usable floor space may vary from the stated floor area. Layout for kitchen, mechanical equipment, and laundry tub may vary from plan. Vertical and horizontal bulkhead, which are not shown on plan, may be required for plumbing and mechanical runs. Appliances are not included. E. & O. E.



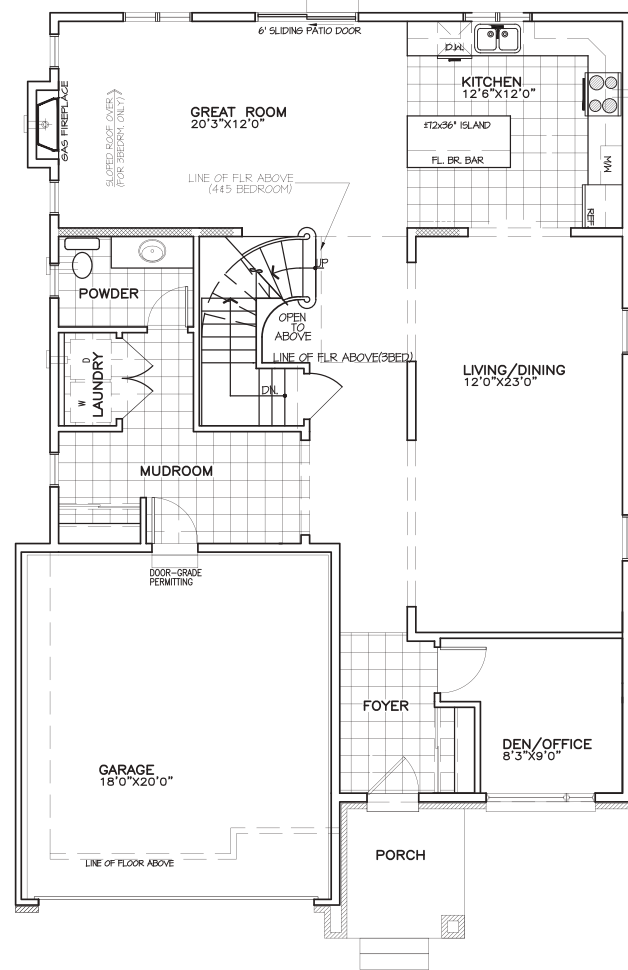
Winchester

2,476- 2,897 sq. ft.

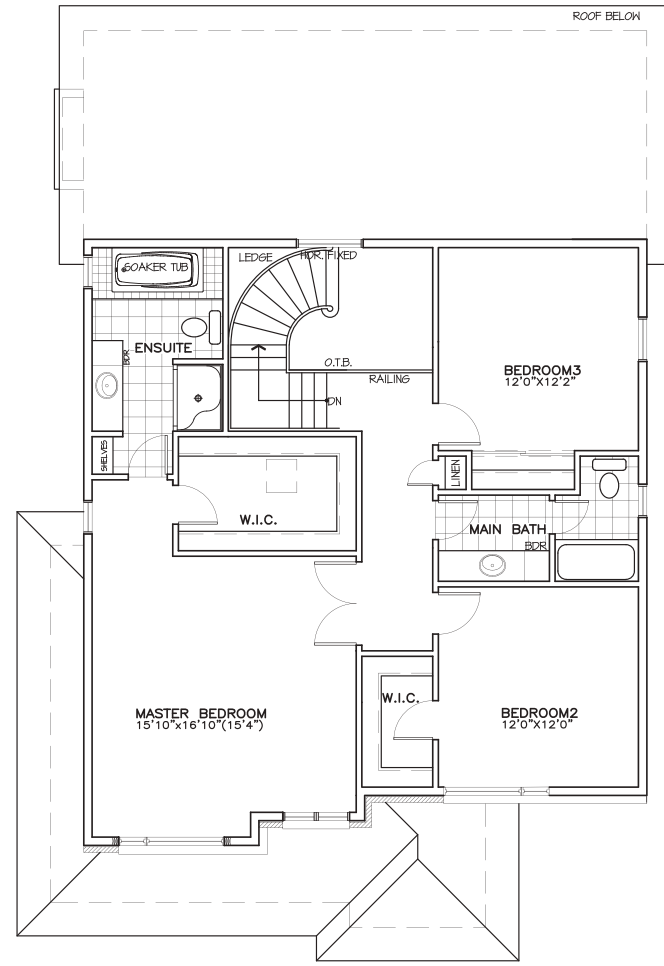
M



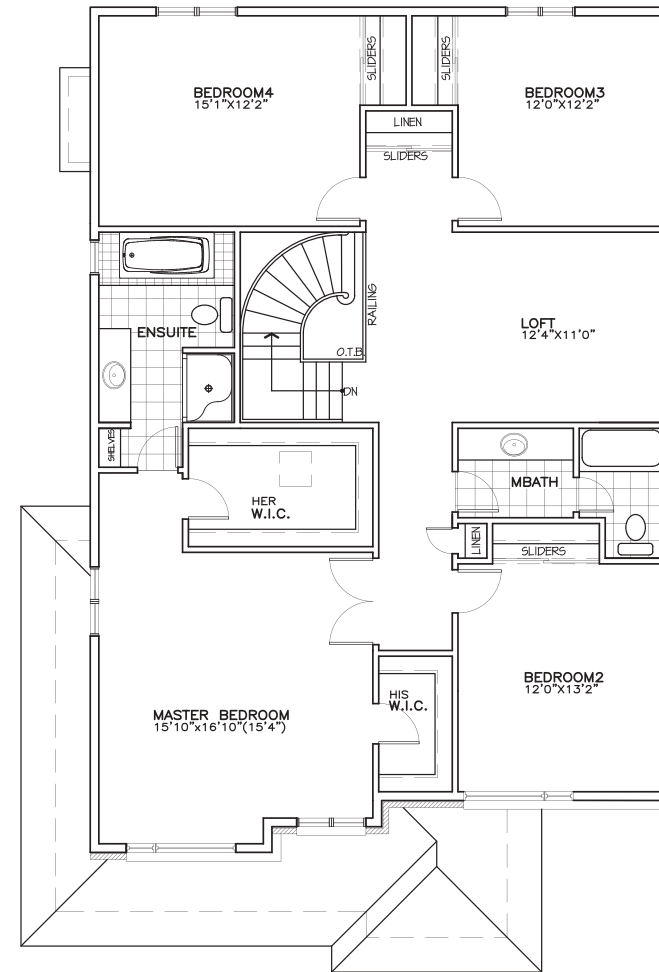
Winchester



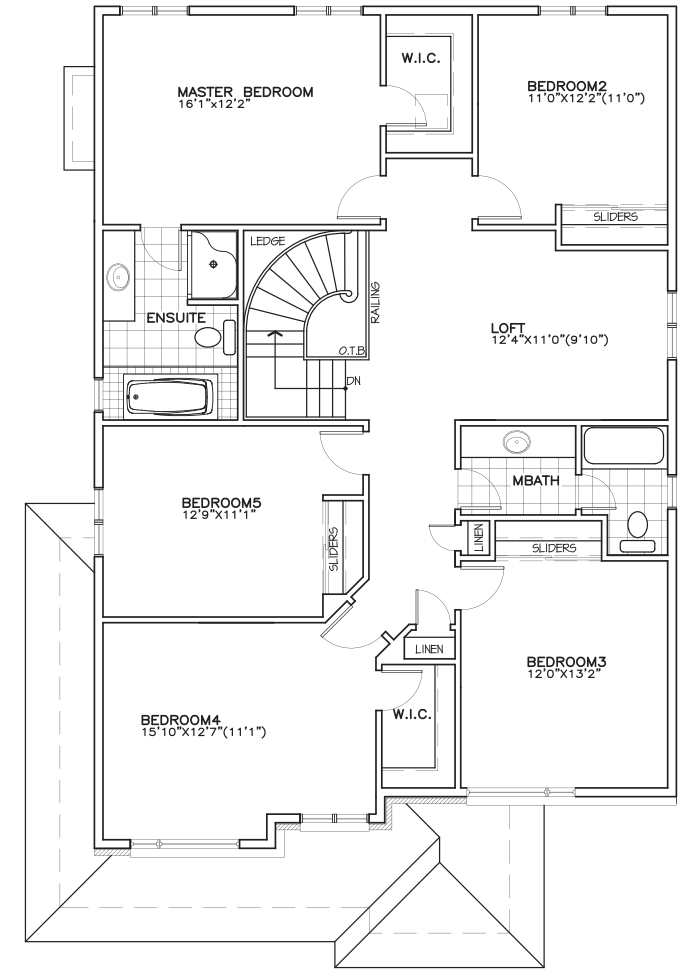
GROUND FLOOR PLAN
Elevation M



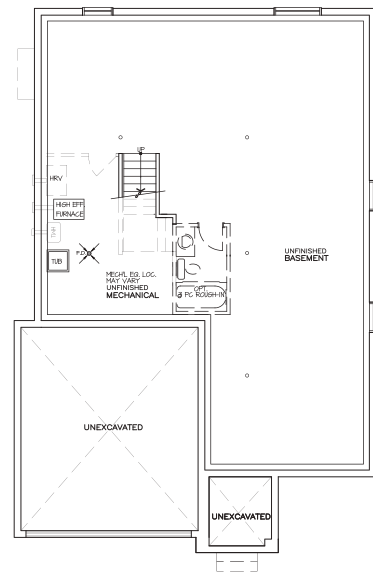
SECOND FLOOR PLAN
Elevation M



**OPT 4
BEDROOM + LOFT**
Elevation M



**OPT 5
BEDROOM + LOFT**
Elevation M



BASEMENT PLAN
Elevation M

Winchester

*Total square footage includes open space where applicable. Plans are subject to change without notice. Actual usable floor space may vary from the stated floor area. Layout for kitchen, mechanical equipment, and laundry tub may vary from plan. Vertical and horizontal bulkhead, which are not shown on plan, may be required for plumbing and mechanical runs. Appliances are not included. E. & O. E.

