

# Oakside

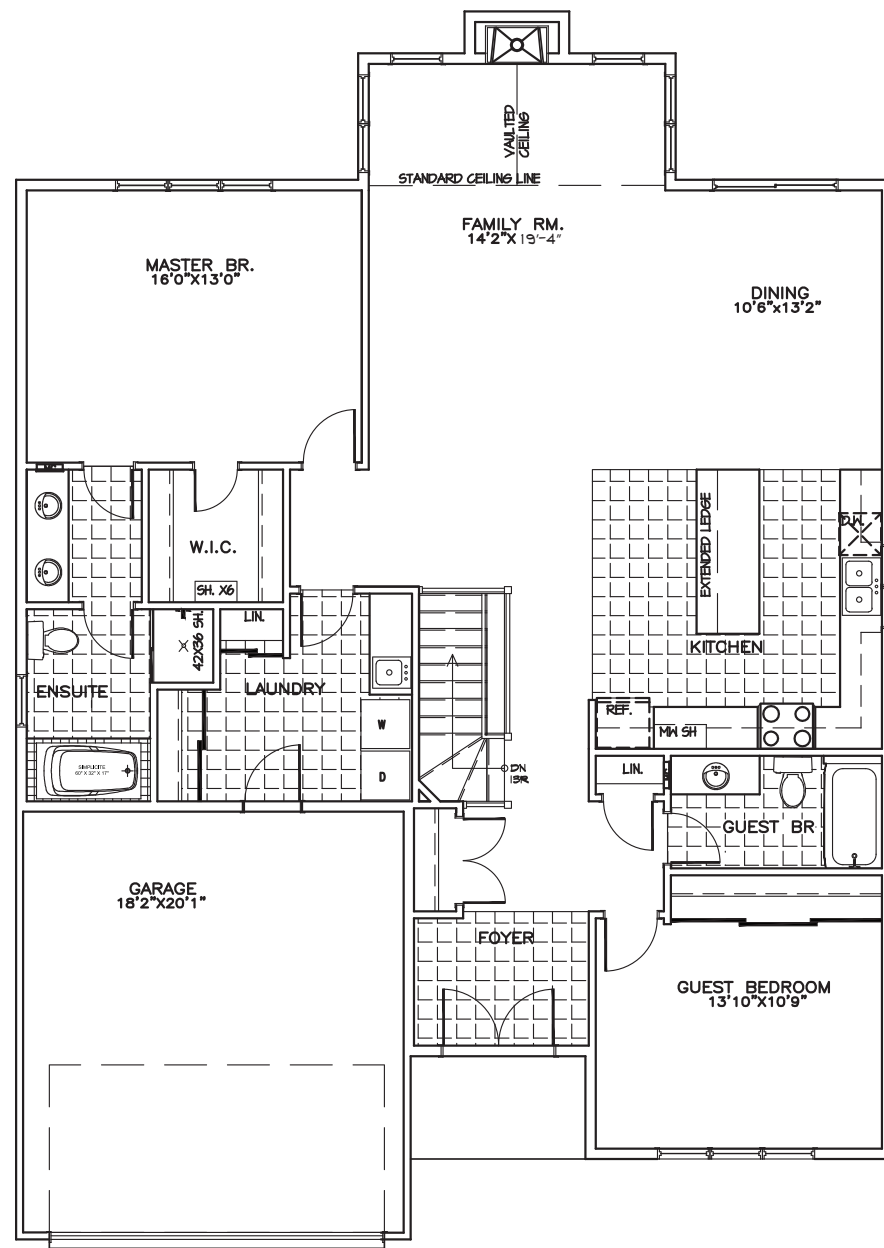
FROM 2,635 sq.ft.



**PHOENIX HOMES**  
SINCE 1988

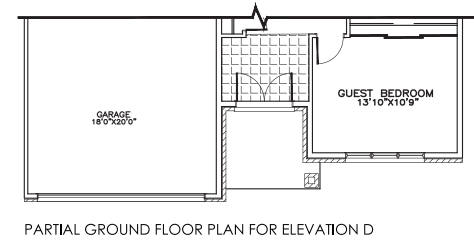


**PHOENIX HOMES**  
SINCE 1988

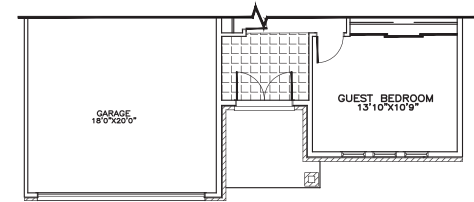


## GROUND FLOOR PLAN

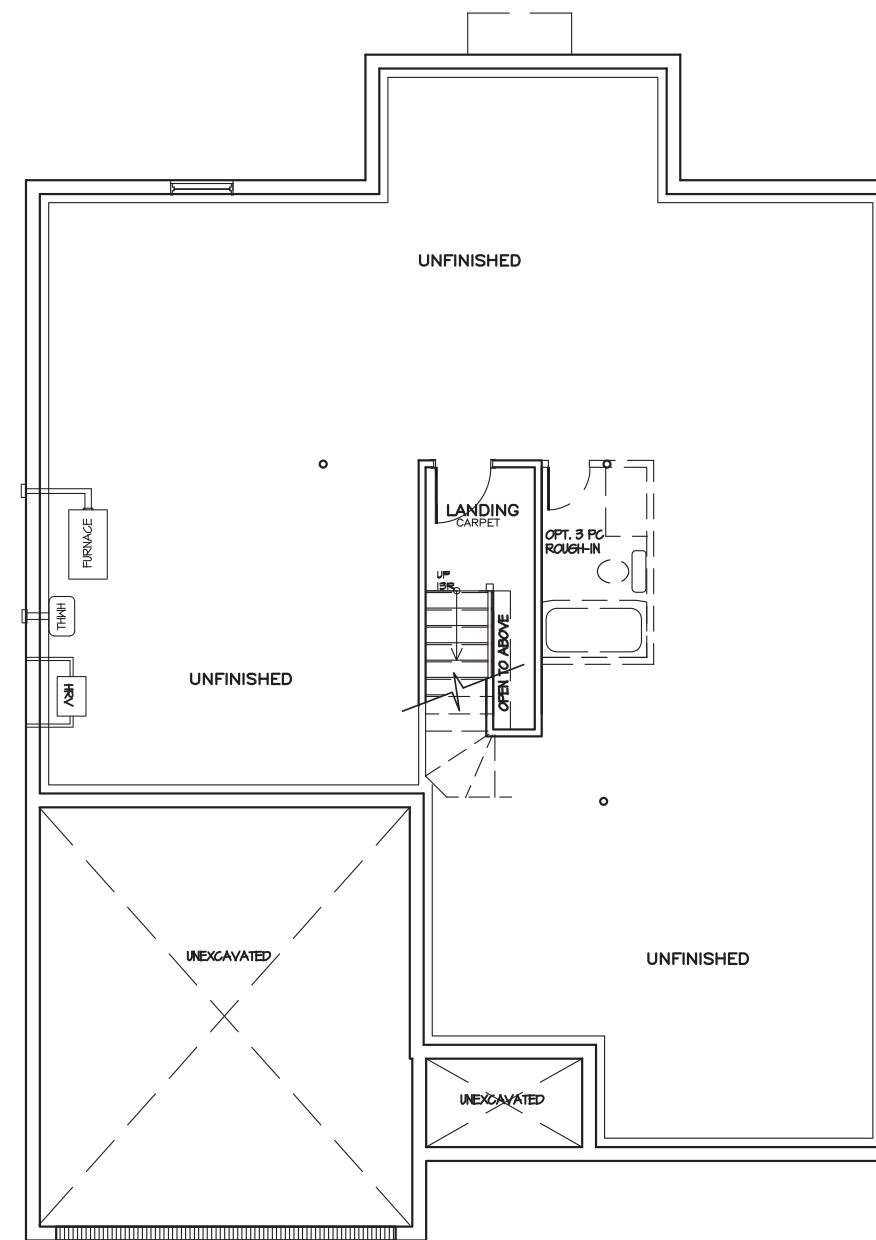
Elev. A



PARTIAL GROUND FLOOR PLAN FOR ELEVATION D

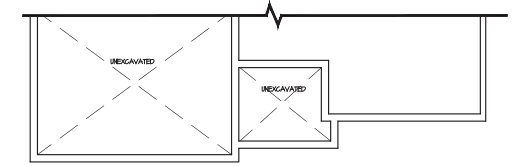


PARTIAL GROUND FLOOR PLAN FOR ELEVATION C & E



## BASEMENT PLAN

Elev. A



PARTIAL FOUNDATION PLAN FOR ELEVATION C/ D/ E

\*Total square footage includes open space where applicable. Plans are subject to change without notice. Actual usable floor space may vary from the stated floor area. Layout for kitchen, mechanical equipment, and laundry tub may vary from plan. Vertical and horizontal bulkhead, which are not shown on plan, may be required for plumbing and mechanical runs. Appliances are not included. E. & O. E.

