

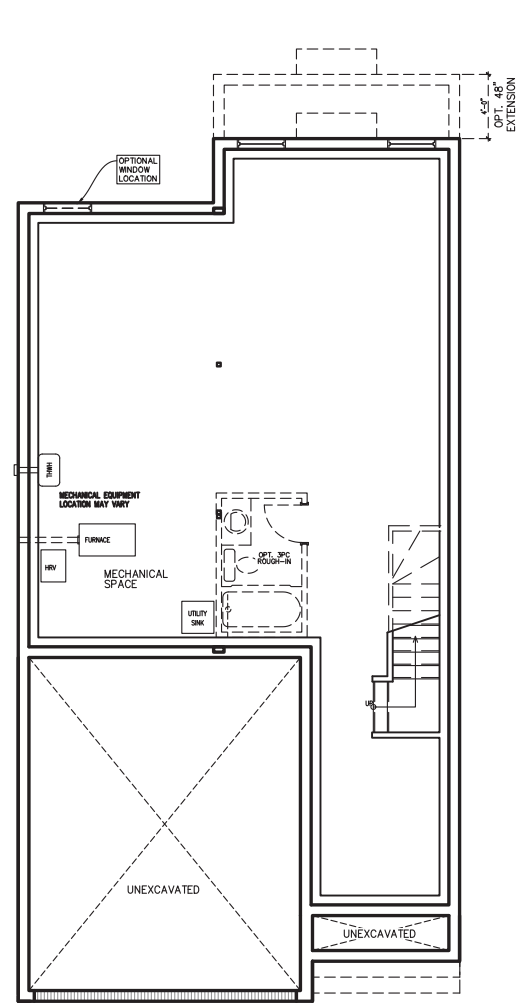
# Strathmore

2,235 sq.ft.+ | 4 bed | 3 bath

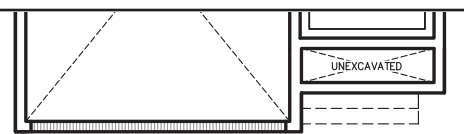


[www.phoenixhomes.ca](http://www.phoenixhomes.ca)

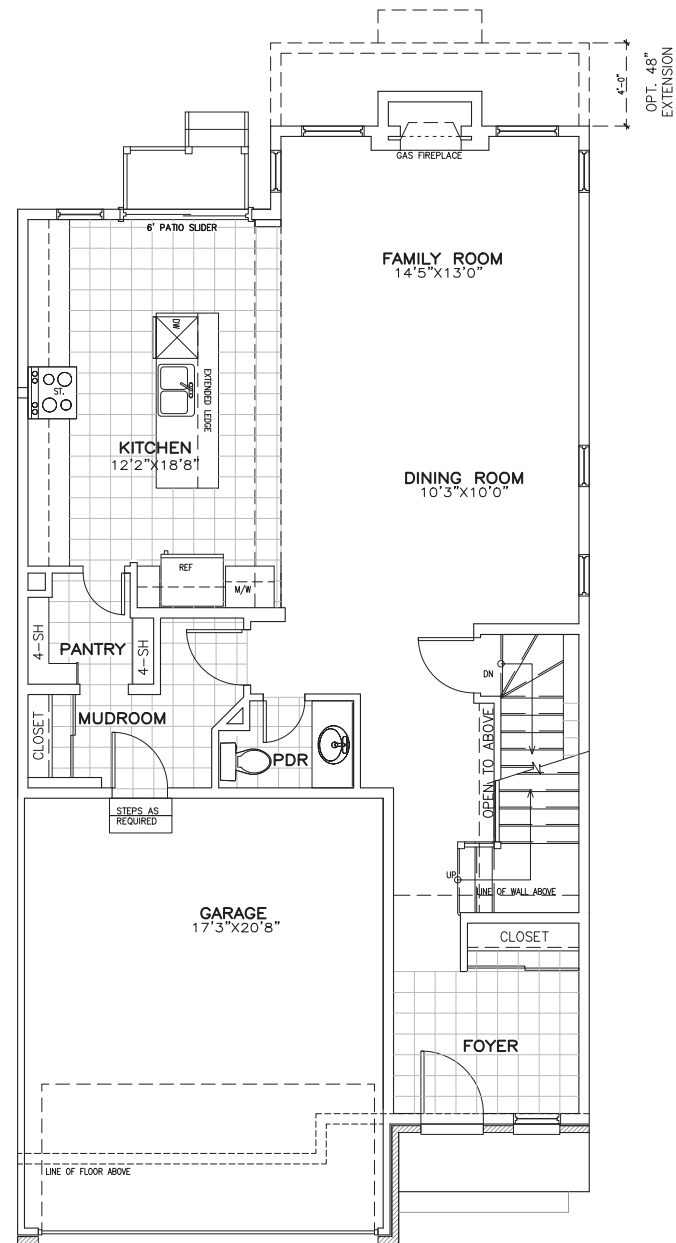
📷 @phoenixhomesottawa | 📘 @phoenixhomesottawa



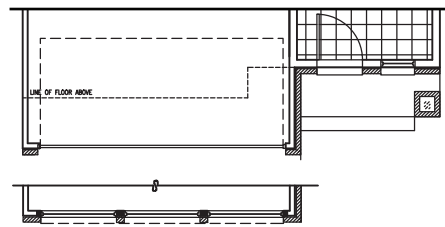
ELEVATION R, C  
**BASEMENT PLAN**



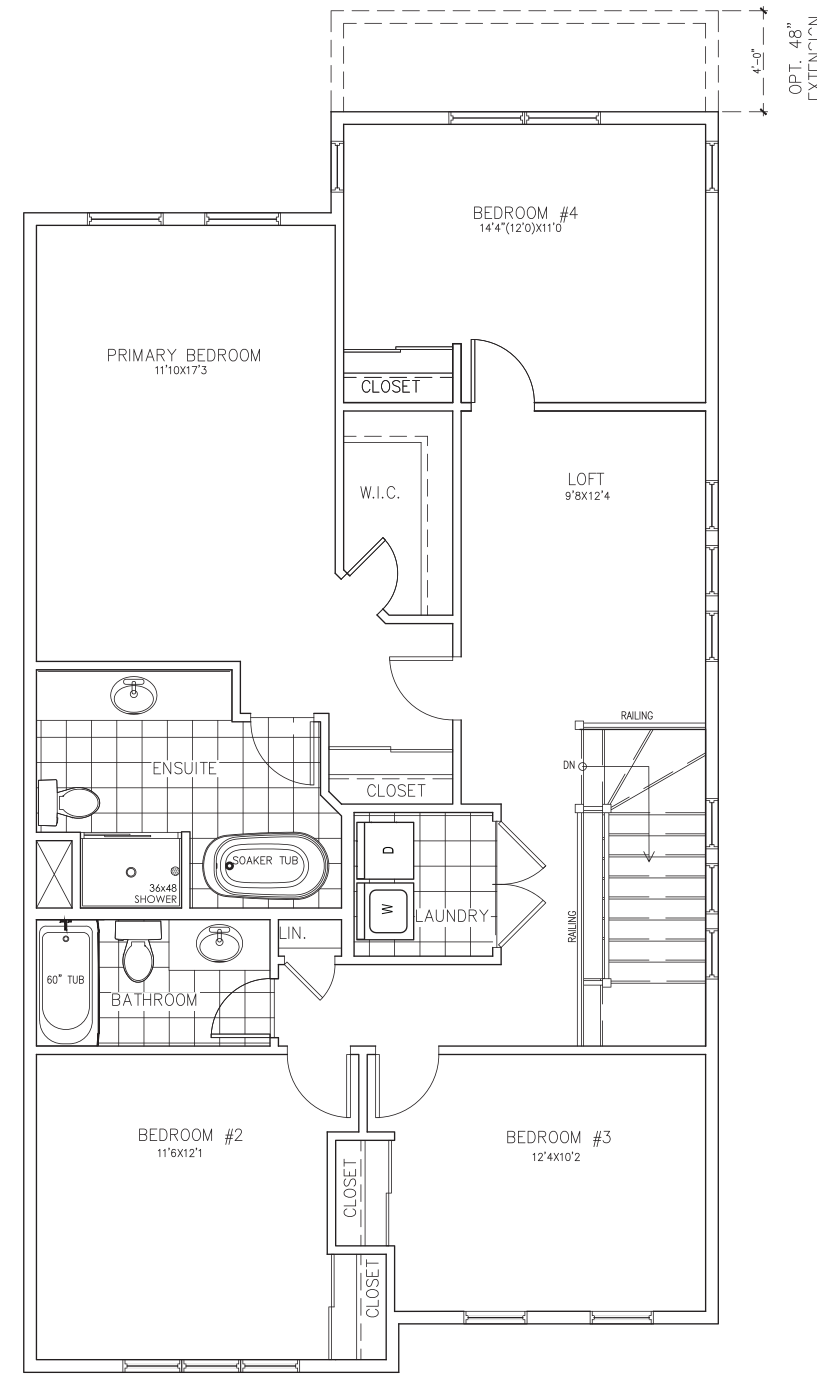
ELEVATION M



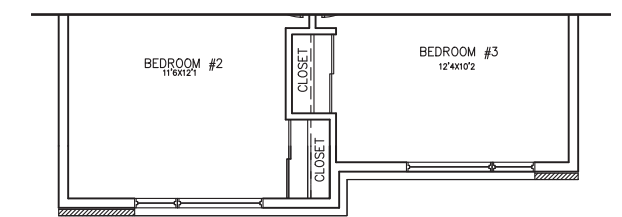
ELEVATION R  
**GROUND FLOOR PLAN**



STRUCTURE FOR WINDOWS ABOVE  
GARAGE DOOR FOR M ELEVATION  
ELEVATION M



ELEVATION R  
**SECOND FLOOR PLAN**



ELEVATION M

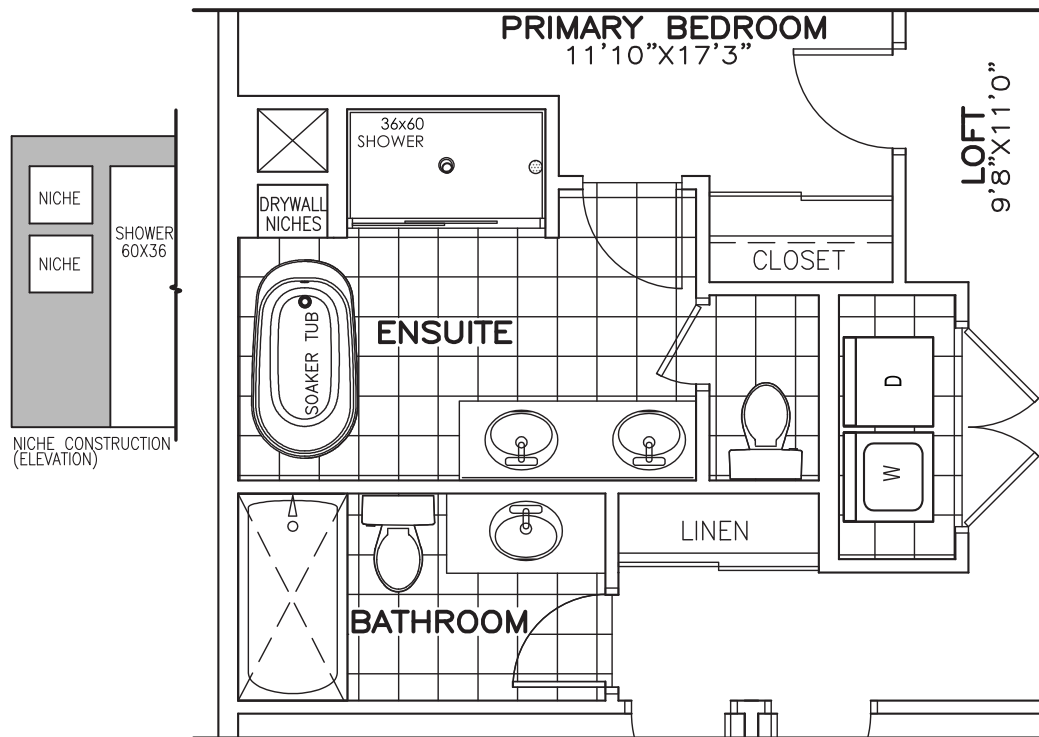
\* THIS HOME HAS ALTERNATE FLOORPLANS AVAILABLE.

**Strathmore** | Elevation R, standard floorplan

\*Plans are subject to change without notice. Actual usable floor space may vary from the stated floor area. Layout for kitchen, mechanical equipment, and laundry tub may vary from plan. Vertical and horizontal bulkhead, which are not shown on plan, may be required for plumbing and mechanical runs. Appliances are not included. E. & O. E.



## Alternate ensuite option



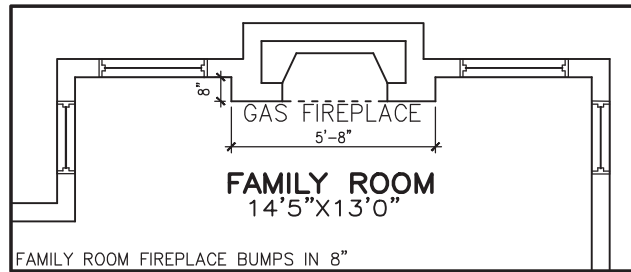
OPTIONAL ENSUITE WITH ENLARGED SHOWER AND ENLARGED LINEN CLOSET (LAUNDRY ROOM REDUCED)

Plans subject to change. E. & O.E.

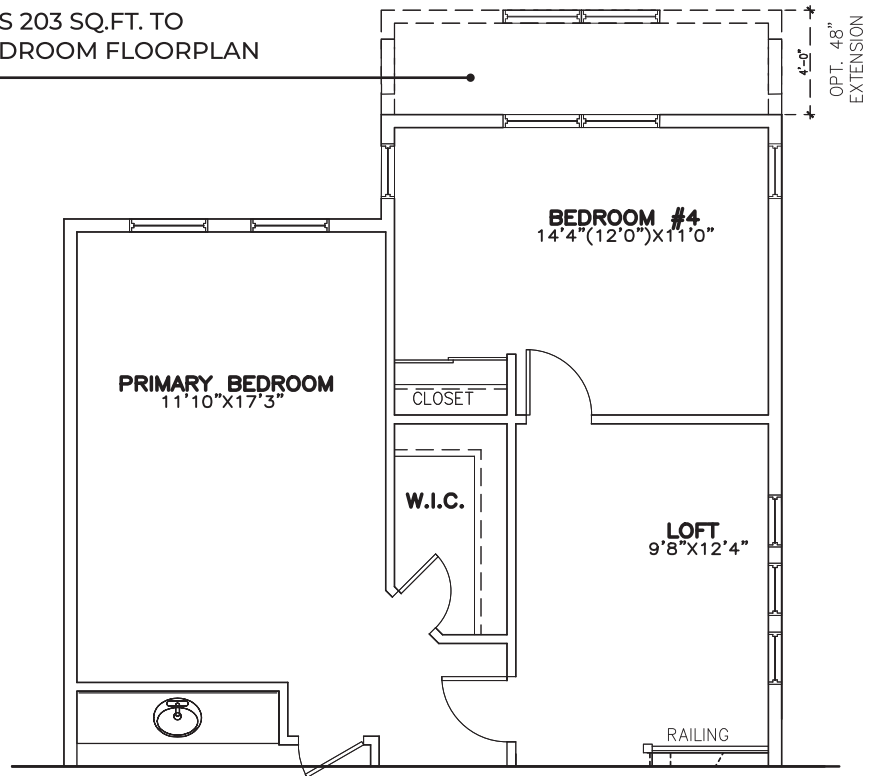
**Strathmore**  
Alternate Options



# Optional Family Room Extension



ADDS 203 SQ.FT. TO  
4 BEDROOM FLOORPLAN



Plans subject to change. E. & O.E.

# Strathmore

Alternate Options

