



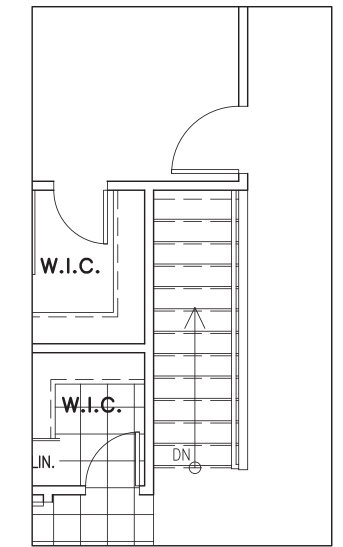
Sable

1,499 sq.ft.* | 3 bed | 2-3 bath

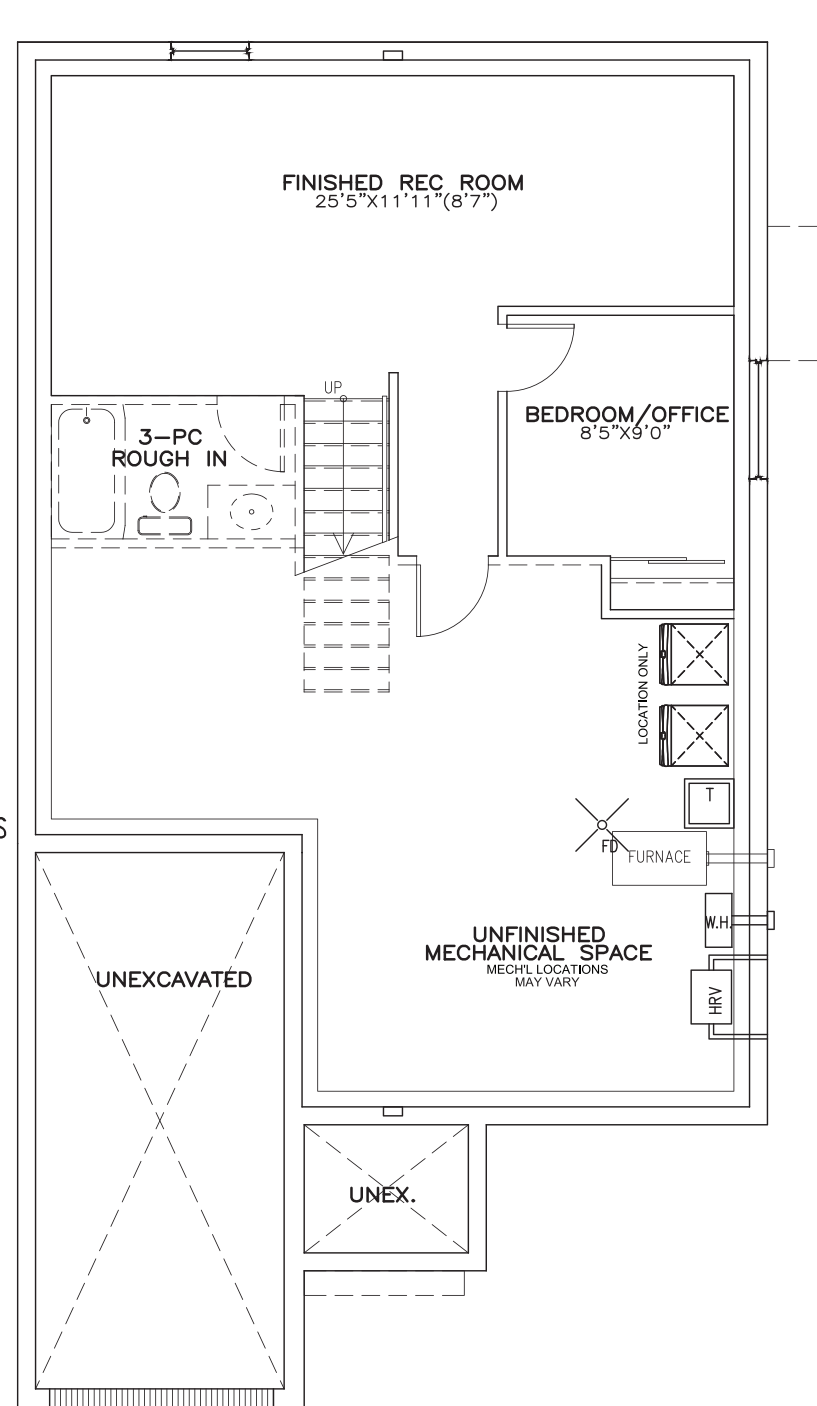


www.phoenixhomes.ca

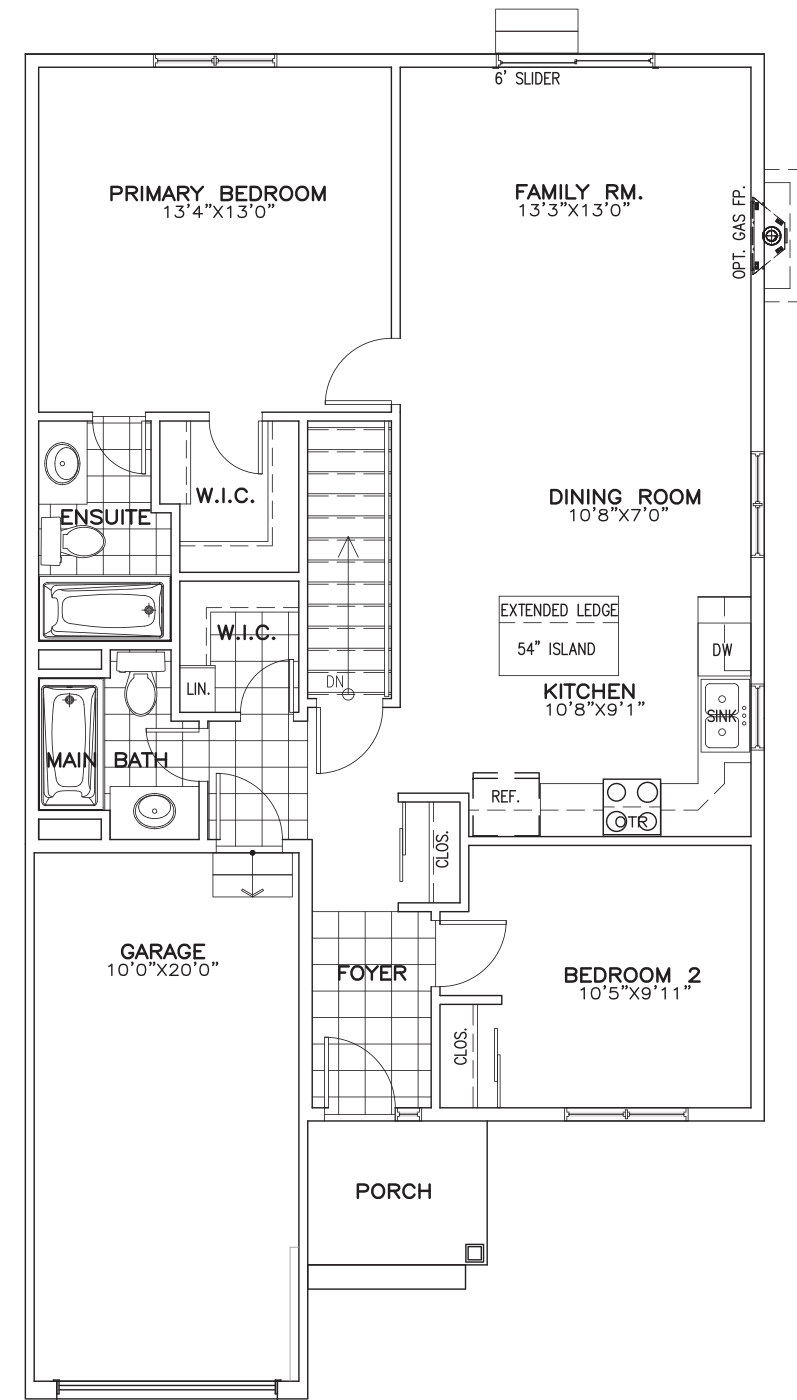
 @phoenixhomesottawa |  @phoenixhomesottawa



PART. GROUND FLOOR PLAN
OPT. OPEN BASEMENT STAIRS



ELEVATION L
FINISHED BASEMENT PLAN



ELEVATION L
GROUND FLOOR PLAN